



## INVESTING IN NEW FUELS

Cruise lines are investing in research projects to develop new fuel sources with fuel suppliers, shipyards, technology manufacturers and academic institutions.



## PAVING THE WAY WITH LOWER CARBON FUELS

By 2027, more than half of the new capacity of the global cruise fleet will be powered by the transitional fuel liquid natural gas with up to 20% less greenhouse gas emissions.



## ACTING NOW FOR FUTURE-PROOFED SHIPS

Engines and fuel supply systems are being designed so that no changes will be needed when renewable synthetic liquid natural gas becomes viable at scale.



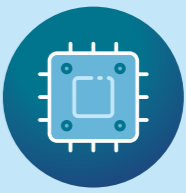
## EXPLORING HYBRID SOLUTIONS

Research projects are taking place on hybrid options such as LNG-hydrogen powered ships, or fuel cells and batteries for further emission reductions.



## PROTECTING OUR OCEANS

Cruise lines are investing in technologies to preserve ocean biodiversity. For instance, innovative coatings to prevent foreign organisms from being deposited in the ocean. Cruise lines have invested in many projects with NGOs to protect ocean wildlife and coastal ecosystems.



## USING DIGITAL TECHNOLOGY TO DRIVE EFFICIENCIES

Digital technology is offering new ways to increase energy efficiencies. From tracking the energy use of appliances in a ship's galley to routing ships optimally for weather safety and fuel efficiency.



## INVESTING IN SHORESIDE ELECTRICITY

At least 75% of cruise ships will be capable of connecting to shore side electricity within the next five years.



## COUNTING ON PORTS

Based on publicly announced investments, we anticipate 7% of cruise berths in Europe will offer shoreside electricity by 2027.

## OUR VISION IS NET ZERO CARBON CRUISING BY 2050 AND CHANGES ARE HAPPENING NOW

Sustainable cruising involves three pillars of action:



Reducing the carbon footprint of ships while at berth and at sea



Investing in advanced environmental technologies onboard



Partnering with cities and ports on sustainable tourism



## SAVING ENERGY WITH INNOVATION

Strategic use of solar panels on a cruise ship generates enough power to operate approximately 7,000 LED lights which last 25 times longer and use 80% less energy.



## APPLYING CIRCULAR ECONOMY PRINCIPLES

The extent of recycling on ships is often superior to many cities. Some ships can repurpose 100% of waste generated aboard – removing, reusing, recycling, and converting waste to energy.



## REDUCING FUEL CONSUMPTION

Use of air lubrication systems on ship hulls helps to reduce drag and fuel consumption.



## FACILITATING TOURISM FLOWS

CLIA and its members work with city leaders to implement innovative solutions to help manage tourism flows such as mobile app technology and opening new visitor routes.



## PARTNERING WITH CITIES AND PORTS

The industry works with cities and ports to develop action plans to deliver sustainable tourism. CLIA's partnership with Dubrovnik led to a Global Sustainable Tourism Council assessment, which helped the city create a sustainability action plan, "Respect the City."



## INVESTING IN COMMUNITIES

The industry is working with local tourism stakeholders to improve the sustainability of their activities. Cruise lines are investing in projects with local communities and sourcing local products.



## PURIFYING WASTEWATER

Advanced wastewater purification systems are often equivalent to the best shoreside treatment plants. 100% of new ships on order are specified to have advanced wastewater treatment systems.



## APPLYING STRICT REGULATIONS

Every cruise ship receives multiple inspections each year from the ports they visit and countries where they are registered to ensure implementation of strict environmental and safety regulations.

# SUPPORTING JOBS AND ECONOMIES ACROSS EUROPE

Cruise tourism contributes to local economies across European coastlines and islands

**40%**

Nearly 40% of the 1.2 million people supported by the global cruise industry are based in Europe

**80%**

Europe is world-leading in building cruise ships – 80% of orderbook value of commercial ships are cruise ships

**€700**

Cruise travellers spend an average €700 in port cities during a typical seven-day cruise

**400K**

More than 400,000 jobs supported across Europe

**300+**

300+ European ports are visited by cruise ships

**246**

There were 246 cruise ships operating in European waters in 2019

